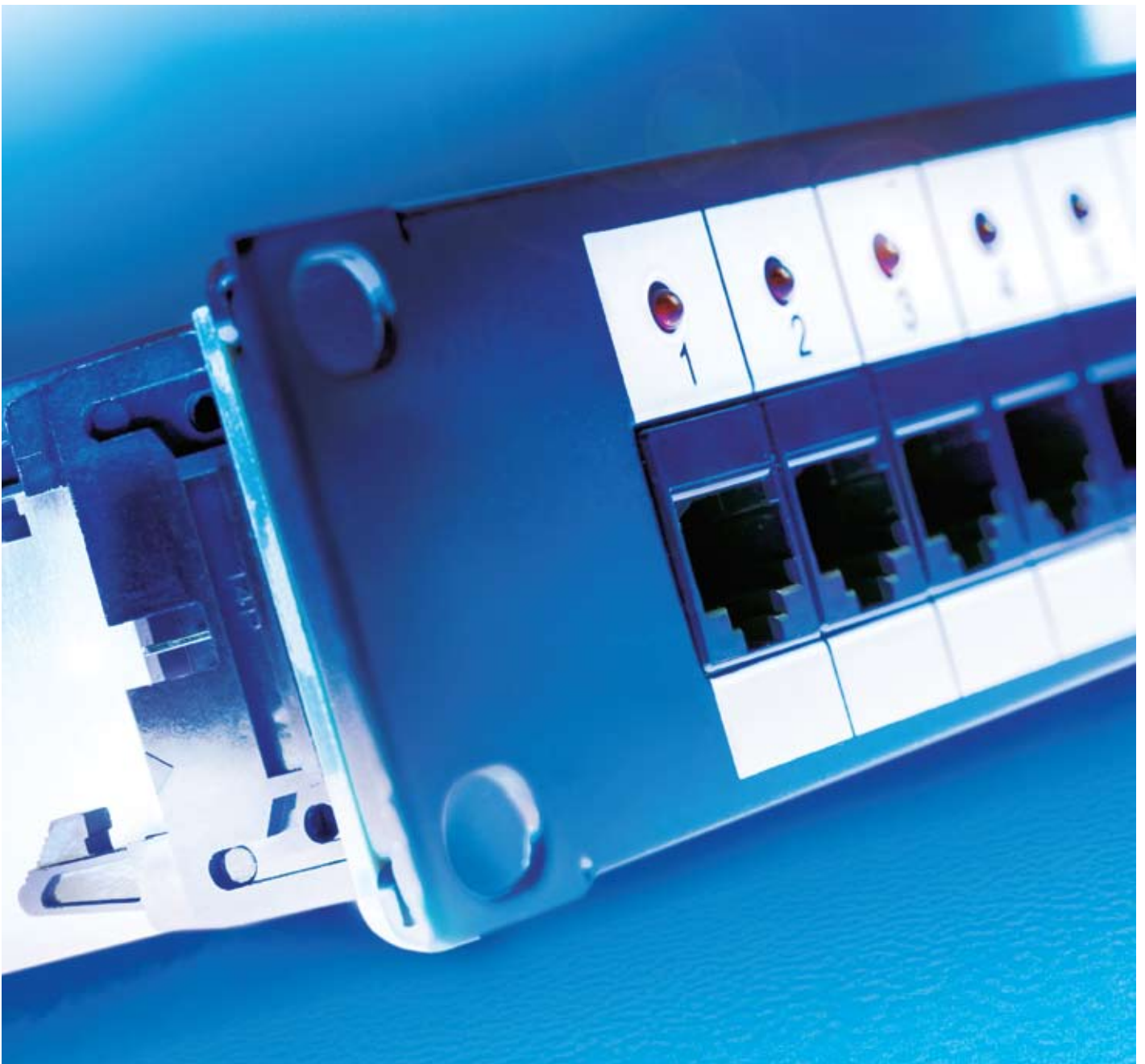


Intelligent Infrastructure  
Management Solutions

**SP**  
SMARTPATCH

**Brand-Rex** 





## A trusted voice in a world of confusion

Brand-Rex has developed the enviable position of being Europe's premier, home based provider of 'best in class' communication infrastructure solutions. This position has been gained through a core philosophy of delivering maximum performance through design excellence. With a reputation as one of the most respected expert voices within the technical community, Brand-Rex has built a business and product ethos around trust. A high level of knowledge, experience and integrity, developed during three decades of networking deployment, allows Brand-Rex to consistently deliver first class solutions and a first class service to customers.

### What is SmartPatch?

SmartPatch is a highly advanced overlay system that allows network managers the opportunity to have real time visibility of network connectivity and utilisation. The system provides simple and controlled management and recording of common network changes such as those forced by office moves and terminal additions. Referred to as an Intelligent Infrastructure Management System (IIMS), SmartPatch also gives multi-site businesses the tools to effectively monitor and manage all sites from a central location.

### Network Management Challenges

In today's world of high speed connectivity the importance of 100% availability of IT services is widely recognized as business critical. The introduction of best practice standards for IT Service Management has set the benchmark as IT Infrastructure Library (ITIL). ITIL has been adopted as the basis for ISO 20000 the global standard for IT Service Management.

At the core of an IT Service Management framework are the configuration, change and incident management processes. The accuracy and quality of the information contained within the main configuration management database (CMDB) is critical in ensuring the effectiveness, efficiency and quality of all associated IT Service Management processes.

Traditionally, configuration management is the most difficult discipline to implement due to the manual effort needed to maintain accurate records of the constant changes to the IT infrastructure using basic and disparate tools. The management of changes to the CMDB is also highly critical, as service delivery managers must know the exact implications of carrying out any changes before they take place. As stated by a spokesperson of the British Computing Society, "How can you manage IT services if you don't know what equipment you have, where it is located, how it is connected, and the impact of changing it?"

Creating such systems and processes based upon a traditionally managed cabling infrastructure is an almost impossible task. The connectivity and asset information contained within manually maintained, traditional tools and documentation processes, is inevitably inaccurate, outdated and therefore cannot be safely incorporated into a robust CMDB. This creates a large degree of uncertainty concerning the physical location and associated connectivity of network devices, services and service paths or routes. This severely limits the speed of hardware deployment and the quality of IT Service Management, and is therefore a major barrier to successful ITIL adoption.



### The Solution

By adopting Intelligent Infrastructure Management tools as a key part of an IT Service Management strategy, IT Managers can create an infrastructure platform capable of addressing these problems. The ultimate goal is the provision of a 100% accurate, real-time, trusted source of connectivity and asset information that can be incorporated within the core CMDB, and that can be utilised to enhance all associated IT service management tools and processes.

Any physical additions or changes to the network configuration are quickly and accurately planned and executed before being automatically updated and reflected across all management processes, thereby optimising process efficiency and aiding communication and co-ordination between work-streams. Unauthorised events and incidents affecting the infrastructure can be instantaneously identified and forwarded to the appropriate service management tool or team for rectification

The most significant benefits of the system may be summarised as:

- Reduced Cost and Increased Effectiveness of IT Operations
- A Platform for High Availability Network Management Services
- Improved Customer Responsiveness
- Improved Information Quality
- Enhanced Physical Security

### **Intelligent Infrastructure Management in the office and in the datacentre**

Within the datacentre, sufficient space, power and cooling capacity must be allocated to accommodate new application servers. Planning of multiple cable routes is the most time consuming element of the commissioning process and one that is highly susceptible to error. This also extends into the standard office environment. Commissioning a new, or moving an existing, workstation requires significant time and resources to effectively route the required services to the appropriate desktop location.

Prior to the introduction of IIM, the planning of service routing and the subsequent creation of the resulting work orders was a long and complex manual process. Adopting an IIM solution can allow IT managers to simultaneously manage power, cooling and environmental management applications along with space and weight capacities to optimise the process of designing changes.

#### **SmartPatch – the smart choice**

SmartPatch is the market leading IIM solution. It provides an auto-routing capability within its work order management function that automatically designs routes for the required services to the necessary location via the most efficient and effective cable links available. The work orders required to execute the activity are systematically created, issued and managed by the SmartPatch system. Any actions that do not adhere 100% to the work order are instantaneously identified and rectified if required.

Utilising SmartPatch to automatically provision services within a standard office environment could improve change efficiency (and hence reduce cost) by 40% or more. Within the datacentre IIM has been proven to reduce server service provisioning times by up to 80% whilst simultaneously reducing the number of incidents caused by poorly executed change. If incidents occur SmartPatch can dramatically reduce mean time to resolution (MTTR) by up to 40%.

Successful adoption of IT Service Management is critically dependant on a trusted source of documentation. Many organisations currently rely on tribal knowledge and / or numerous sets of spreadsheets, diagrams, whiteboards, post-it notes and the memory of long-serving individuals to document the elements of their physical infrastructure. These methods are no longer acceptable means of managing the IT infrastructure for those organisations that are serious about IT service management.

### **Principles of Operation**

SmartPatch uses a combination of software and hardware to monitor and manage physical network connections. A topology of scanners and intelligent patch panels, send and receive connectivity updates into the SmartPatch for the Enterprise (SP4E) software application, providing real-time data and automatically updated records. The software element of SmartPatch not only allows the monitoring and management of physical connectivity, the availability of a fully developed SDK means that the benefits of accurate, real time information can also be integrated into most commonly available network, facilities, configuration and helpdesk management applications.

### **First Class Support and Customer Service**

SmartPatch is delivered through a select network of approved partners, trained by Brand-Rex to install and commission the hardware and software components of the system. Partners are accredited to one of three levels depending on their core competences, including hardware-only partners, software commissioning partners and full system providers. Training is also delivered by Brand-Rex to potential clients, with the flexibility of location between one of our global offices or using the client's own facilities. Additional support services including software and hardware maintenance contracts, system design and customisation can also be tailored to suit individual needs. Our philosophy on training and technical support is that we will work with our partners or directly with the client to ensure that the system is fully operational and to assist in ensuring that SmartPatch is effectively implemented and used to maximum benefit.

### **Tried and tested – safe in the hands of the market leader**

Whilst IIM is still regarded by some as an emerging technology suited to the needs of certain clients and environments, there is no doubt that it will continue to grow. A number of customers in Europe and beyond have already enhanced their Brand-Rex infrastructures with SmartPatch in diverse sectors including finance, national and local government bodies, medical research, sports stadia and further education. To date, over 3 million ports worldwide are managed by this technology, equating to over half the market in terms of share by both volume and value.

## SMARTPATCH PRODUCT RANGE

### Scanning Hardware

A group of components designed to capture physical connectivity information from the patch panels and feed it into the SP4E application and to communicate patching guidance information from the application to the panels. All units are 19" and 1u high offering a robust, compact, high density scanning topology solution, with very low power requirements and thermal output. This system offers full scalability from as few as 6 panels to massive comms rooms with no upper limit to the size of the patching zone.



**SPMax Master** collects and transmits connectivity information between scanners and the application. It can control multiple comms rooms, includes an SNMP agent and manages the scanning algorithm.

**SPMax Expander** is used to multiply the capacity of a master allowing upto eight scanners to communicate with a single master port. Expanders may be stacked to allow further expansion.

**SPMax Master Expander** is used as the primary point of communication between the application and a single, large comms room such as a datacentre and may be connected to further Expanders.



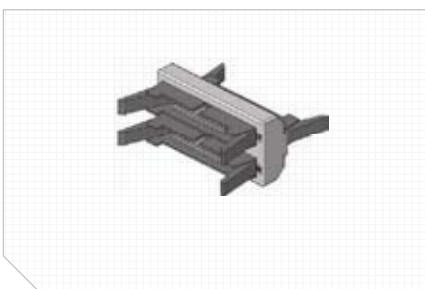
**SPMax Scanners** connect directly to the copper and fibre patch panels and report either directly to a Master or via Expansion. Scanners monitor upto 24 panels and Mini Scanners upto 12 panels.

**SPMax Local Scanner** is designed to monitor small groups of panels, usually in remote locations. It monitors upto 6 panels and can communicate directly to the application via its LAN port.

**SPMax Indicator Controller** controls the Rack Indicators (lights) on upto eight racks. It is connected to the SmartPatch system via an Expander port.

**SPMax Security Controller** controls up to eight Indicators and also has the capacity to control and monitor external devices and sensors, up to a total of 32 devices.

## CONNECTIVITY COMPONENTS



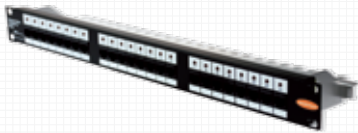
**SPMax Splitter** is used to attach non SPMAX (ie older generation) panels to the new scanning hardware, ensuring full utilisation of the SPMax topology.



### Scanner Attachment Cords

Scanner connection cables are used to connect SmartPatch panels, (copper and fibre) to their scanner. Cords are available in both flat and round configurations in various lengths up to 12m. Cords are classified as Group A (26) pin or Group 2 x14 pin (B) formats to suit the different panel layouts.

The variety of lengths available add flexibility to the design possibilities using SmartPatch panels, multiple panels in distributed racks may be monitored by a single scanner, allowing for simplified designs and reduced power requirements.

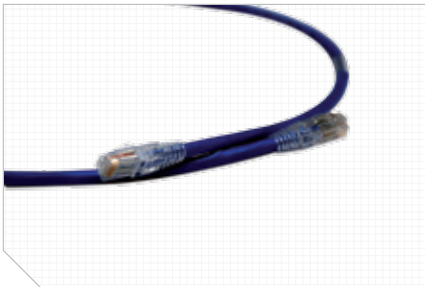


### Copper Patch Panels

Smart Patch panels are fully compliant with the performance requirements of the latest Cat5e, Cat6 and Cat6A standards and are incorporated into the Brand-Rex 25 year warranty scheme.

Each panel is equipped with extra pins, circuitry, LED's and scanner connectors to allow the monitoring and recording of patching status. This information is communicated back to the server via scanner attachment cords to the scanner system and onto the LAN. The LEDs above each port are used to trace connectivity or to offer patching guidance to the engineer.

*Note - When ordering panels it is important to note the type of scanner attachment cord required.*



### Copper Patch Cords

Smart Patch cords are designed specifically for use with Smart panels. They comprise a flexible 9 wire cable construction terminated on 10 position RJ-45 plugs at each end. The additional wire and pins, located outside the standard 8 pins, are used to detect the patching position of the cord.

Cords for the snap-in or retrofit solutions also utilise an external blade in addition to the 9th pin to make contact with the smart tabs on the panel.



### Fibre Patch Panels

Smart Patch panels are fully compliant with the performance requirements of the latest standards and are incorporated into the Brand-Rex 25 year warranty scheme.

Each panel is equipped with extra pins, circuitry, LED's and scanner connectors to allow the monitoring and recording of patching status. This information is communicated back to the server via scanner attachment cords to the scanner system and onto the LAN. The LEDs above each port are used to trace connectivity or to offer patching guidance to the engineer.

*Note - When ordering panels it is important to note the type of scanner attachment cord required*



### Fibre Patch Cords

SmartPatch SC, MT-RJ and LC patch cords are designed for use on SmartPatch installations. They comprise, in all variants, two tight buffer fibres and an additional 26 AWG copper wire housed within a common outer jacket. Patch cords are available in OM1 and OM3 multi-mode and single-mode variants. Both ends are terminated with a high performance hybrid connector comprising of an SC duplex, LC duplex or MT-RJ fibre optic connector and a spring-loaded electrical contact housed within a common plastic shell.

## SOFTWARE COMPONENTS



### System Software

#### SmartPatch for the Enterprise (SP4E) v5.0

SmartPatch for the Enterprise (SP4E) is a web-based intelligent infrastructure management software package. It is designed to bring a traditionally inert network infrastructure under control and align it to other processes within the IT function, particularly in terms of history and accountability. It does this by providing real-time end-to-end physical connectivity information and making it possible to monitor and maintain a database of the IT infrastructure from any remote location. SP4E allows the enterprise to automate network documentation and maintenance procedures whilst constantly providing real-time updates to the database.

#### How Does it Work?

SP4E is based on a Client/Server application on top of an SQL relational database and works in combination via standard SNMP with a network topology of intelligent hardware (SPMax and patch panels) in order to control, map and monitor both the physical layer and active LAN equipment.

SP4E also features a unique end-to-end system called P-LET (Proactive LAN Equipment Topology) that tracks network connectivity from the Terminal Equipment (PCs, IP phones, printers etc.) through the connecting hardware, to the Network Equipment (LAN switches, PBXs, hubs etc). The System Administrator is provided with a real-time view of the physical layer, including a combined view of the horizontal and vertical sub-systems. A combination of graphics and real-time information assist the Administrator in making critical decisions about Moves, Adds and Changes (MACs) in the enterprise. These decisions are made for the daily maintenance of the system, network troubleshooting and documentation procedures. SP4E updates the network database to reflect the MAC and IP details of network devices, as well as their physical location in the network.

One of the most significant developments of the SP4E application is the Provisioning module. This module allows users to implement individual MACs, departmental reorganisations or even server deployments simply and efficiently whilst adhering to user defined policies with simple drag & drop operations.

Server	Recommended
Operating System	Windows 2003 Server, Service Pack 1
Memory	2 GB
Processor	Intel® Pentium® 4 processor, 3.4GHz with Hyper-Threading Technology
Free Disk Space	50 GB (Installation + Database)
Display	1280 X 1024 resolution at 32 bit color
Networking	100/1000 Network Interface Card (NIC)
Additional Software	MS SQL Server 2005 Standard/Enterprise Edition for MS Windows 2003. Latest version Internet Explorer with current service packs applied. IIS 6 & MSMQ 3 installed. Server Crystal Reports 11 (for report centre)
Client	Recommended
Operating System	MS Windows 2000/XP Service Pack 2
Memory	1 GB
Processor	Intel® Pentium® processor, >1.0GHz
Additional Software	Latest version Internet Explorer with current service packs applied

## SMARTPATCH PRODUCT PART NUMBERS

## SPMax Hardware

	Part No
SmartPatch SPMax Master 4 ports	SPMXMAS4
SmartPatch SPMax Master Expander	SPMXMEX
SmartPatch SPMax Expander	SPMXEXP
SmartPatch SPMax Scanner	SPMXSCA
SmartPatch SPMax Mini Scanner	SPMXMINSCA
SmartPatch SPMax Local Scanner	SPMXLOCSCA
SmartPatch SPMax Splitter	SPMXSPL
Splitter Attachment Cord, UTP 0.2m	SPSPLACU002
SmartPatch SPMax Security Controller	SPMXSEC
SmartPatch SPMax Indicator Controller	SPMXIC
SmartPatch Rack Indicator	SPMXRI
SPMax Control Pad	SPMXCP

## Scanner Cords

	Part No
Attachment cords 1.5 metre flat, Group A	SPAACA015
Attachment cords 2.5 metre flat, Group A	SPAACA025
Attachment cords 1.5 metre flat, Group B	SPAACB015
Attachment cords 2.5 metre flat, Group B	SPAACB025
Attachment cord 1.5m round Group A	SPAACA015RD
Attachment cord 2.5m round Group A	SPAACA025RD
Attachment cord 6m round Group A	SPAACA060RD
Attachment cord 12m round Group A	SPAACA120RD
Attachment cord 1.5m round Group B	SPAACB015RD
Attachment cord 2.5m round Group B	SPAACB025RD
Attachment cord 4m round Group B	SPAACB040RD
Attachment cord 6m round Group B	SPAACB060RD
Attachment cord 12m round Group B	SPAACB120RD

## Copper Patch Panels

UTP Panels Cat5e	Part No	Scanner Sockets
SmartPatch 24 port UTP Cat 5e panel	SP5PNLU24012	1 x A
SmartPatch 48 port UTP Cat 5e panel 1U	SP5PNLU48012	4 x B
<b>UTP Panels Cat6</b>		
SmartPatch 24 port UTP Cat 6 panel w. retention fixture SPMax	P6PNLU240U2F-14	1 x B
SmartPatch 48 port UTP Cat 6 panel 1U w. retention fixture SPMax	P6PNLU48012F-14	2 x B
<b>UTP Panels Cat6A</b>		
SmartPatch 24 port UTP Cat 6 A panel w. retention fixture SPMax	SPA6PNLU24012	1 x B
<b>STP Panels Cat6</b>		
SmartPatch 24 port STP Cat 6 panel SPMax	SP6PNLF240U2-14	1 x B
<b>STP Panels Cat6A</b>		
SmartPatch 24 port STP Cat 6 A panel w. retention fixture SPMax	SPA6PNLS240K2	1 x B
<b>Snap-In Panels</b>		
SmartPatch 1U SJ panel with management (staggered)	SPMMCPNLX24S	1 x B
<b>110 Voice Blocks</b>		
SmartPatch Voice Block 110, 24, SPMax	SPV110PNL24-14	1 x B
SmartPatch Voice Block 110, 48, SPMax	SPV110PNL48-14	2 x B
SmartPatch 110 Wiring Block, 100 Pair with legs	SPV110WB100PRL	-
SmartPatch 110 Connector Block, 4 Pairs	SPV110CB4PR	-

## Fibre Patch Panels

LC Fibre Panels	Part No	Scanner Sockets
Smart 48 fibre LC (MM) patch panel c/w adapters SPMax	FPPCM1MM48LC2	1 x B
Smart 48 fibre LC (SM) patch panel c/w adapters SPMax	PFPPCM1SM48LC2	1 x B
<b>MT-RJ Fibre Panels</b>		
Smart 48 fibre MT-RJ (MM) enclosure	FPPCM1MM48MJ2	1 X A
Smart 48 fibre MT-RJ (MM) enclosure + cover	PPCM1MM48MJ2C	1 X A
<b>SC Fibre Panels</b>		
Smart 48 fibre duplex SC panel (MM)	PPCM1SMA48DC2	1 X A
Smart 48 fibre duplex SC panel SM (PC)	PFPPCM1SM48DC2	1 X A
Smart 48 fibre duplex SC panel SM (APC)	PPCM1SMA48DC2	1 X A
<b>Fibre Accessories</b>		
Cable Routing Ring Kit (up to 48 Fibres)	SPAFOCRR48	-
Cable Ground Kit	SPAFOCGK01	-
Cable Entry Panel Kit	SPAFOCEP01	-
Splice Cassette Kit (up to 16 fibres)	SPAFOCK12	-
Splice Cassette Expander Kit (up to 16 fibres)	SPAFOCKE12	-
Protection Sleeve Holder	SPAFOPSH06	-

## Copper Patch Cords

UTP Patchcords Cat6	Part No
SmartPatch Cat6 UTP patchcord 1.0m HFFR	SP6PCU010400H
SmartPatch Cat6 UTP patchcord 1.5m HFFR	SP6PCU015400H
SmartPatch Cat6 UTP patchcord 2.0m HFFR	SP6PCU020400H
SmartPatch Cat6 UTP patchcord 2.5m HFFR	SP6PCU025400H
SmartPatch Cat6 UTP patchcord 3.0m HFFR	SP6PCU030400H
SmartPatch Cat6 UTP patchcord 5.0m HFFR	SP6PCU050400H
SmartPatch Cat6 UTP patchcord 7.5m HFFR	SP6PCU075400H
SmartPatch Cat6 UTP patchcord 10.0m HFFR	SP6PCU100400H
<b>UTP Patchcords Cat6A</b>	
SmartPatch Cat6A UTP patchcord 2.0m HFFR	SPA6PCU020400H
SmartPatch Cat6A UTP patchcord 3.0m HFFR	SPA6PCU030400H
SmartPatch Cat6A UTP patchcord 5.0m HFFR	SPA6PCU050400H
<b>STP Patchcords Cat6</b>	
SmartPatch Cat6 STP patchcord 1.0m HFFR	SP6PCS010400H
SmartPatch Cat6 STP patchcord 1.5m HFFR	SP6PCS015400H
SmartPatch Cat6 STP patchcord 2.0m HFFR	SP6PCS020400H
SmartPatch Cat6 STP patchcord 3.0m HFFR	SP6PCS030400H
SmartPatch Cat6 STP patchcord 5.0m HFFR	SP6PCS050400H
<b>STP Patchcords Cat6A</b>	
SmartPatch Cat6ASTP patchcord 2.0m HFFR	SPA6PCS020400H
SmartPatch Cat6ASTP patchcord 3.0m HFFR	SPA6PCS030400H
SmartPatch Cat6ASTP patchcord 5.0m HFFR	SPA6PCS050400H
<b>Retrofit (Snap-in) Patchcords Cat6A</b>	
SmartPatch Cat6A retrofit patchcord 1.0m HFFR	PA6PCU010400HR
SmartPatch Cat6A retrofit patchcord 2.0m HFFR	PA6PCU020400HR
SmartPatch Cat6A retrofit patchcord 3.0m HFFR	PA6PCU030400HR
SmartPatch Cat6A retrofit patchcord 5.0m HFFR	PA6PCU050400HR
SmartPatch Cat6A retrofit patchcord 7.0m HFFR	PA6PCU070400HR
SmartPatch Cat6A retrofit patchcord 10.0m HFFR	PA6PCU100400HR
<b>110 Cross-Connect Cords</b>	
SmartPatch 110 - 110, 1 Pair cord 1.0m	P1V1010PC010400
SmartPatch 110 - 110, 1 Pair cord 2.0m	P1V1010PC020400
SmartPatch 110 - 110, 1 Pair cord 3.0m	P1V1010PC030400
SmartPatch 110 - 110, 1 Pair cord 5.0m	P1V1010PC050400
SmartPatch 110 - 110, 2 Pair cord 1.0m	P2V1010PC010400
SmartPatch 110 - 110, 2 Pair cord 2.0m	P2V1010PC020400
SmartPatch 110 - 110, 2 Pair cord 3.0m	P2V1010PC030400
SmartPatch 110 - 110, 2 Pair cord 5.0m	P2V1010PC050400
SmartPatch 110 - RJ-45, 1 Pair cord 2.0m	P1V10RJPC020400
SmartPatch 110 - RJ-45, 1 Pair cord 3.0m	P1V10RJPC030400
SmartPatch 110 - RJ-45, 1 Pair cord 5.0m	P1V10RJPC050400
SmartPatch 110 - RJ-45, 2 Pair cord 2.0m	P2V10RJPC020400
SmartPatch 110 - RJ-45, 2 Pair cord 3.0m	P2V10RJPC030400
SmartPatch 110 - RJ-45, 2 Pair cord 5.0m	P2V10RJPC050400

## Fibre Patch Cords

LC Patchcords	Part No
Smart fibre patchcord LC (SM) 1.0m	FPFCLC009010LC2
Smart fibre patchcord LC (SM) 2.0m	FPFCLC009020LC2
Smart fibre patchcord LC (SM) 3.0m	FPFCLC009030LC2
Smart fibre patchcord LC (SM) 5.0m	FPFCLC009050LC2
Smart fibre patchcord LC (OM3) 1.0m	FPCLCOM3010LC2
Smart fibre patchcord LC (OM3) 2.0m	FPCLCOM3020LC2
Smart fibre patchcord LC (OM3) 3.0m	FPCLCOM3030LC2
Smart fibre patchcord LC (OM3) 5.0m	FPCLCOM3050LC2
Smart fibre patchcord LC (62.5) 1.0m	FPFCLC062010LC2
Smart fibre patchcord LC (62.5) 2.0m	FPFCLC062020LC2
Smart fibre patchcord LC (62.5) 3.0m	FPFCLC062030LC2
Smart fibre patchcord LC (62.5) 5.0m	FPFCLC062050LC2
<b>MT-RJ Patchcords</b>	
Smart fibre patchcord MT-RJ (62.5) 1.0m	FPCMJO62010MJ2
Smart fibre patchcord MT-RJ (62.5) 2.0m	FPCMJO62020MJ2
Smart fibre patchcord MT-RJ (62.5) 3.0m	FPCMJO62030MJ2
Smart fibre patchcord MT-RJ (62.5) 5.0m	FPCMJO62050MJ2
Smart fibre patchcord MT-RJ (OM3) 1.0m	FPCMJO3010MJ2
Smart fibre patchcord MT-RJ (OM3) 2.0m	FPCMJO3020MJ2
Smart fibre patchcord MT-RJ (OM3) 3.0m	FPCMJO3030MJ2
Smart fibre patchcord MT-RJ (OM3) 5.0m	FPCMJO3050MJ2
Smart fibre patchcord MT-RJ (SM) 1.0m	PFPCMJSM010MJ2
Smart fibre patchcord MT-RJ (SM) 2.0m	PFPCMJSM020MJ2
Smart fibre patchcord MT-RJ (SM) 3.0m	PFPCMJSM030MJ2
Smart fibre patchcord MT-RJ (SM) 5.0m	PFPCMJSM050MJ2
<b>SC Patchcords</b>	
Smart fibre patchcord SC (SM) 1.0m	FPFCSM010SC2
Smart fibre patchcord SC (SM) 2.0m	FPFCSM020SC2
Smart fibre patchcord SC (SM) 3.0m	FPFCSM030SC2
Smart fibre patchcord SC (SM) 5.0m	FPFCSM050SC2
Smart fibre patchcord SC (62.5) 1.0m	FPFCSM062010SC2
Smart fibre patchcord SC (62.5) 2.0m	FPFCSM062020SC2
Smart fibre patchcord SC (62.5) 3.0m	FPFCSM062030SC2
Smart fibre patchcord SC (62.5) 5.0m	FPFCSM062050SC2
Smart fibre patchcord SC (OM3) 1.0m	FPCSCOM3010SC2
Smart fibre patchcord SC (OM3) 2.0m	FPCSCOM3020SC2
Smart fibre patchcord SC (OM3) 3.0m	FPCSCOM3030SC2
Smart fibre patchcord SC (OM3) 5.0m	FPCSCOM3050SC2

## Software

Packages	
SP4E Core	SPASUNLPV5COR
SP4E Standard	SPASUNLPV5STD
SP4E Advanced	SPASUNLPV5ADV
SP4E Plus	SPASUNLPV5PLS
Modules	
SP4E Discovery Module	SPASPLET5
SP4E Provisioning Module	SPASPROV5
SP4E PBX Module	SPASPBX5
SP4E Cable Test Results Module	SPASTEST5
SP4E SDK Runtime	SPASSDKRT5
Offline Ports	
SP4E Core Offline Ports	SPASAPOFFCOR5
SP4E Standard Offline Ports	SPASAPOFFSTD5
SP4E Advanced Offline Ports	SPASAPOFFADV5
SP4E Plus Offline Ports	SPASAPOFFPLS5
Additional Online Ports	
SP4E Core Additional Online Ports	SPASAPONCOR5
SP4E Standard Additional Online Ports	SPASAPONSTD5
SP4E Advanced Additional Online Ports	SPASAPONADV5
SP4E Plus Additional Online Ports	SPASAPONPLS5
Upgrade	
Upgrade from 4.X to SP4E 5.0 Standard	SPASUG4-500STD
Upgrade from 3.X to SP4E 5.0 Standard	SPASUG3-500STD
Demo License	
Demo Software License -	SPASDEMO5
Report Center License	
Report Center - Additional User	SPASRPTCR
SiteBuilder License	
SiteBuilder Inventory Editor Module 2.5	SPASSBLDINV
SiteBuilder Links & Work Order Editor Module 2.5	SPASSBLDLWO
Switch Driver	
SP4E Customization for a new switch driver	SPASCUSTDPV5
Dashboard	
Dashboard 2.2 - User	SPASDASH2-2
SitePro License	
SitePro 1.4 - User	SPASSPRO14
CAD Module	
SP4E 5.0 - CAD Module License (Without Autodesk MapGuide)	SPASCADV5
Upgrade - CAD Module from SP4E Version 4.x to Version 5.0	SPASCADUG4-500
3rd Party Software	
Microsoft SQL 2005 (Including Media Package and License)	SPASMSSQL2005
Crystal Reports 11 (Including Media Package and License)	SPASCRYST11
Autodesk MapGuide 6.5 only (Including Media Package and License)	SPASMAPG65
Autodesk MapGuide Upgrade to 6.5	SPASMAPGUG-65
SDK Developer	
SDK Developer	SPASSDKDEV
Software Support Agreement	
Basic Software Support Agreement	SSAUPDUNL
Premium Software Support Agreement	SSAUPGUNL

To match client requirements, SP4E is now available in 4 standard packages which may be enhanced with any of a range of additional modules.

Contents of each of the packages are as follows:

**Core**

SP4E + Report Centre (1)

**Standard**

SP4E + Report Centre (1) + Discovery Module

**Advanced**

SP4E + Report Centre (1) + Discovery Module + Provisioning Module + Site Pro (1) + CAD Module

**Plus**

SP4E + Report Centre (5) + Discovery Module + Provisioning Module + Site Pro (5) + CAD Module + Dashboard (5) + Site Builder

**OPTIONAL MODULES**

**Provisioning Module** – enables a user to assign system resources and privileges in a fully automated environment. Significantly improves the planning and provisioning process, including automated Moves Adds & Changes (MAC), for datacentre and workspace environments. The module also enables users to incorporate their proprietary rules.

**CAD Module** – compatible with Autodesk MapGuide Server Version 6.5 and allows user to manage SmartPatch inventory items on a location map using standard (GIS) operations.

SP4E offline ports can be purchased enabling a user to manage the company's infrastructure for the parts of the organization where Smart Cabling System is not installed.

**Report Centre** – Can be ordered for additional users.

**PBX Module** – takes the information acquired from the PBX ports and maps the end-to-end connectivity between the PBX switch port and the telephone end device.

**Cable Test Results Module** – contains data for link and channel electrical cable tests for each port. Includes an option to view results using a PDF/FLW viewer.

**SitePro** - Offers the ability to access SP4E information at the rack via PDA.

**SDK Developer** – enables developers to integrate SP4E into 3rd party or legacy applications.

**SDK Runtime** – enables customers to extend SP4E's capabilities throughout their organization by integrating it with 3rd party or legacy applications.

**SiteBuilder** – an Excel based utility that offers an alternative way of uploading large amounts of SP4E related information onto the SP4E database.

**Additional Ports / Upgrades**

The modular nature of the application means that it can be simply upgraded to the latest version and can easily be scaled up to reflect the changing size of the network.

**Software Support**

Support contracts are available in both update and upgrade versions, offering in addition to helpline and troubleshooting, free fixes, enhancements updates and/or version upgrades.





**brand-rex head office**  
viewfield industrial estate  
glenrothes, fife  
KY6 2RS  
united kingdom

**tel:** +44 (0) 1592 772124  
**fax:** +44 (0) 1592 775314

**brand-rex argentina**  
c/ingeniero butty 240, piso 4º  
(C1001AFB) buenos aires  
argentina

**tel:** +54 11 4590-2242 / 4  
**fax:** +54 11 4590-2201

**brand-rex asia pacific**  
17/F prosperity centre  
77-81 container port road  
kwai chung  
hong kong

**tel:** +852 3620 2602  
**fax:** +852 3621 0018

**brand-rex china**  
room B105-A23, FESCO building  
No. 14 chaoyangmen nandajie  
changyang district  
beijing  
pr china

**tel:** +852 3620 2602  
**fax:** +852 3621 0018

**brand-rex central & eastern europe**  
millennium tower  
handelskai 94-96  
1200 wien  
austria

**tel:** +431 24027 512  
**fax:** +431 24027 66510

**brand-rex france**  
120, rue jean jaurès  
92 300 levallois perret  
france

**tel:** +33 (0) 1 70 98 78 25  
**fax:** +33 (0) 1 70 98 78 36

**brand-rex germany**  
bunsenstrasse 5  
D-51647 gummersbach  
germany

**tel:** +49 (0) 2261 814243  
**fax:** +49 (0) 2261 814909

**brand-rex IMEA**  
PO box 123908  
M-3 mezzanine floor  
sheikha sana building  
sheikh zayed road  
al wasl, dubai  
united arab emirates

**tel:** +971 4 321 7525  
**fax:** +971 4 321 7535

**brand-rex italy**  
via giovanni da udine, 34  
20156 milano  
italy

**tel:** +39 02 3809 3711  
**fax:** +39 02 30412014

**brand-rex london**  
72 cannon street  
london  
EC4N 6AE  
united kingdom

**tel:** +44 (0) 207 489 7637  
**fax:** +44 (0) 207 113 2239

**brand-rex nordic**  
mänskensvägen 14A  
44340 gråbo  
sweden

**tel:** +46 (0) 704 621950

**brand-rex portugal**  
lagoas park edificio 8 – piso 0  
2740-244 porto salvo  
portugal

**tel:** +351 21 421 4133  
**fax:** +351 21 421 4135

**brand-rex spain**  
avenida de la vega, 1  
edificio 3. planta 2. oficina 11  
28108 alcobendas  
madrid, spain

**tel:** +34 914 905 919  
**fax:** +34 916 573 331

[www.brand-rex.com](http://www.brand-rex.com)  
[marketing@brand-rex.com](mailto:marketing@brand-rex.com)

The information contained in this document is valid and correct at the time of issue. However, we reserve the right to modify details without notice in the light of subsequent Standard / Specification changes and ongoing technical developments.  
© Brand-Rex Limited 2008

Literature Ref: SMARTPATCH/UK/2 0908

